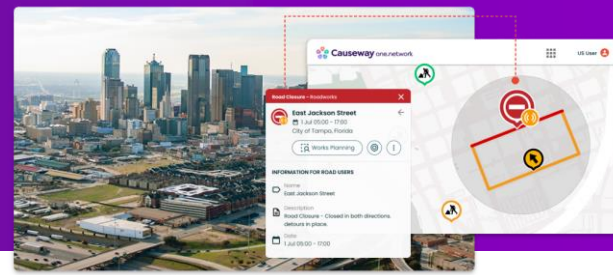
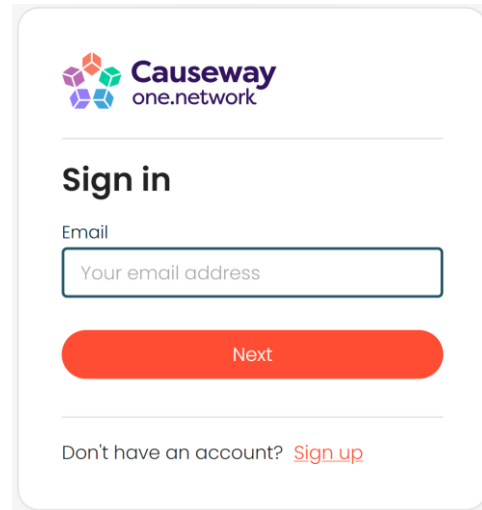


Resetting your password

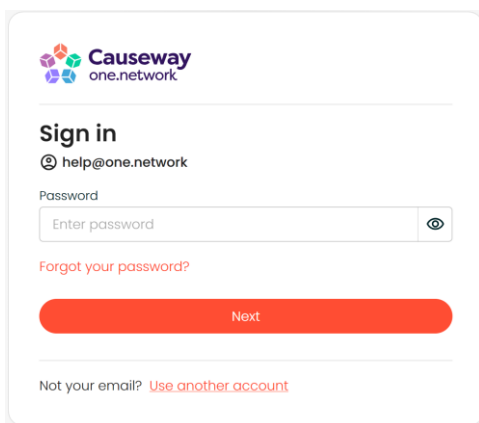


How to reset a forgotten password

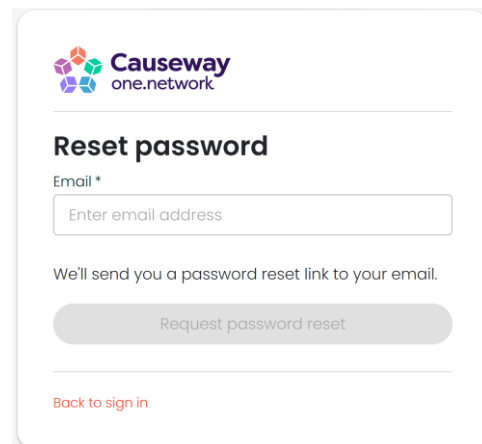


1. Click the **Sign in** button located in the top right-hand corner of the page.

2. Enter your email address and click **Next**.

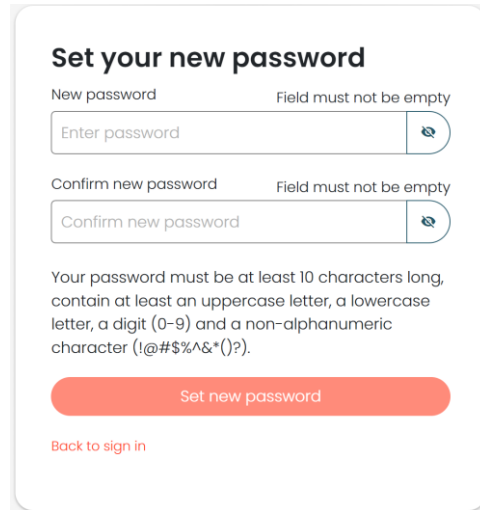
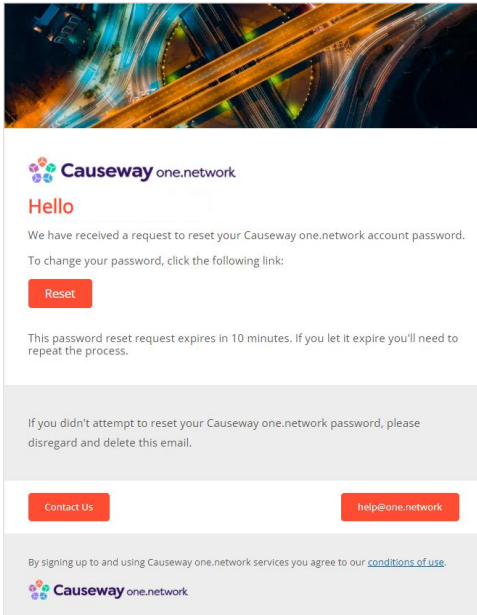
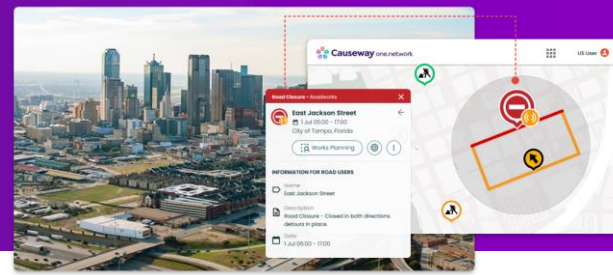


3. Click **Forgot your password?**



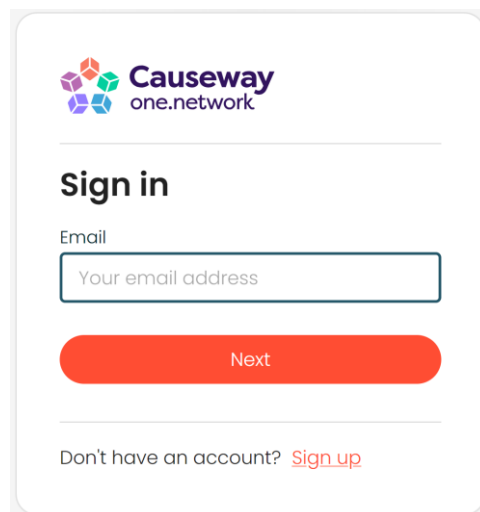
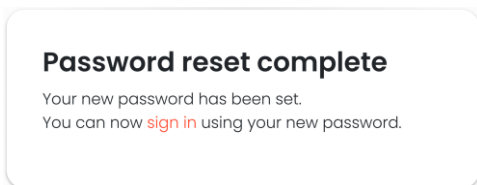
4. Enter your email address and click **Request password reset**.

Resetting your password



5. In your email, open the email from noreply@one.network with the subject “Reset your one.network password” and click **Reset**.

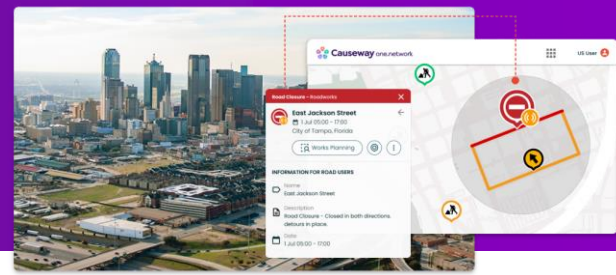
6. In the browser tap that opens, enter your new password and click **Set new password**.



7. On the “Password reset complete” screen, click **sign in**.

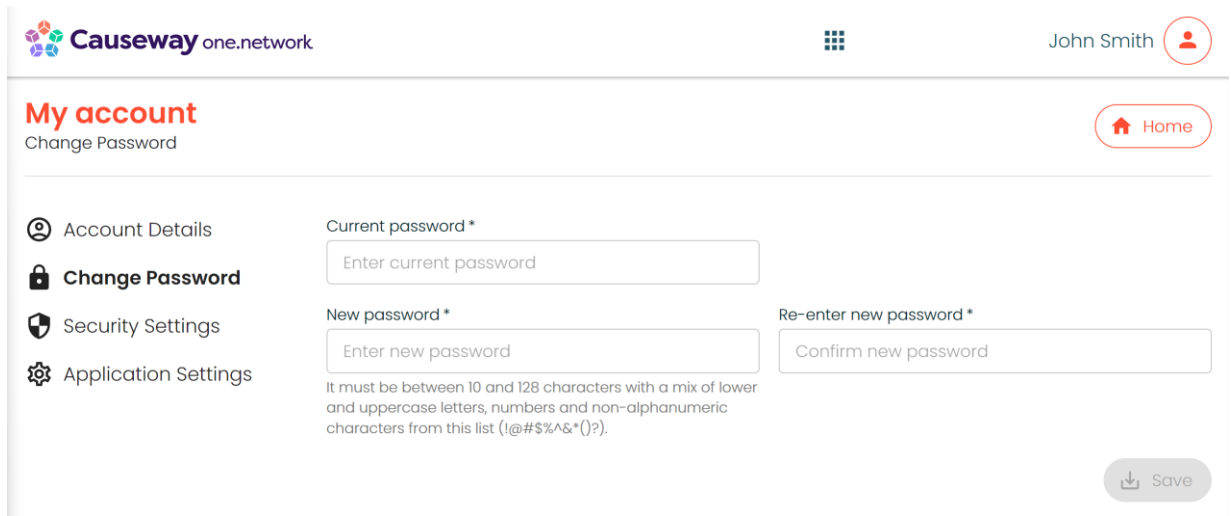
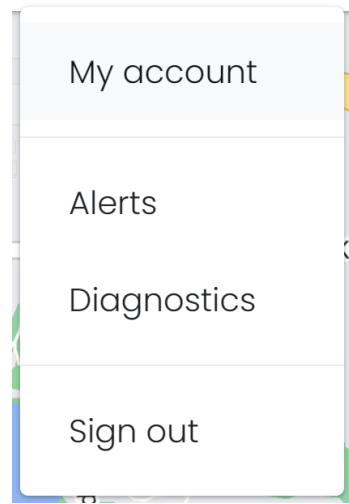
8. Follow the normal sign in process with your new password.

Resetting your password



How to change your password

1. Click the **Sign in** button located in the top right-hand corner of the page.
2. Click the **user icon** in the top right-hand corner of the page.
3. Click **My account** from the drop down menu.



4. Click **Change Password** in the My account menu on the left side of the screen
5. Enter your current password, followed by your new password, and click **Save**.